

# MAP

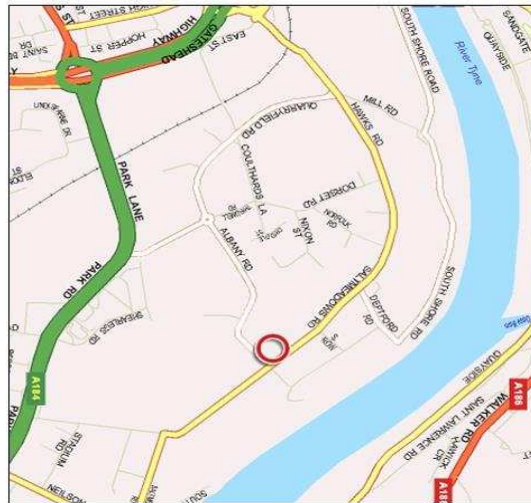
## Travelling From West

1. From the A69, turn right onto the A1 western bypass and towards the South.
2. Take the slip road onto the A184 and head into Gateshead.
3. Stay in the left hand slip lane and come off before bridge and turn right at the roundabout staying on the A184
4. On the A184 dual carriageway, stay in the outside lane and go straight over the next two sets of lights.
5. At the next set of lights go straight over heading towards Gateshead Quays. (Sage)
6. Turn right at the next lights and then left onto Saltmeadows Road. ( Mecca bingo at junction)
7. Go under the small bridge
8. Pass the new Gateshead College on the right, straight through the traffic lights.
9. Past Albany motors on the right / Gregg's bakery on the left.
10. Take a right on the street signposted Albany Road
11. Take another right, straight ahead through the gates and into the car park.

C2M (UK) Ltd,  
Suite 48, Gear House, Saltmeadows Road,  
Gateshead, Tyne & Wear, NE8 3AH  
Tel: 0191 4901154 / Mob: 07980 675688  
Email enquiries@c2muk.co.uk  
Website: www.c2muk.co.uk  
Registered Company No 5088233:  
Vat No 859 8113 85

## Travelling From The North

1. Over the Tyne Bridge
2. Then take the second left, signposted Gateshead quays.
3. Then follow the road straight down, through the traffic lights
4. Go under the small bridge
5. Pass the new Gateshead College on the right, straight through the traffic lights.
5. Past Albany motors on the right / Greggs bakery on the left.
7. Take a right on the street signposted Albany Road
3. Take another right, straight ahead through the gates and into the car park.



## Travelling From The South

1. Leave the A1 at the Angel of the North
2. Head north towards Newcastle on the A167 for several miles.
3. After passing the Legacy Springfield Hotel on the right, go through two more sets of lights and take the slip road on the left before the flyover .
4. Go under the underpass heading towards Newcastle staying in the outside lane. At the roundabout turn right onto the A184.
5. At the next lights, turn left and pas HFW plastics
6. Take a right at the roundabout on the street signposted Albany Road
7. After the bend, take another left, straight ahead through the gates and into the car park.

## Travelling From East

1. From the A19, take the A184 towards Gateshead
2. At Heworth roundabout, go straight over through the lights.
3. Follow the road until you see Gateshead Stadium on your right.
4. Take the next right onto Neilson Road at the lights next to the stadium.
5. Go to the end of Neilson Road and turn left at the T Junction
6. Pass the Baltic business centre and around the two sharp bends.
7. At the next junction, tum left in front of the bakery ( After highway truck rental on the left) onto Albany road
8. Take another right, straight ahead through the gates and into the car park.

**C2M** UK LTD.  
Concept to Manufacture